

Wasatch Pixels QUAD Controller

Wiring Diagram

Note 1: LED Pin Assignments in WLED:

- LED 1 - Pin 2
- LED 2 - Pin 4
- LED 3 - Pin 12
- LED 4 - Pin 14

These are preassigned, but are listed here in case the firmware is reset. These can be set in WLED under Config -> LED Preferences.

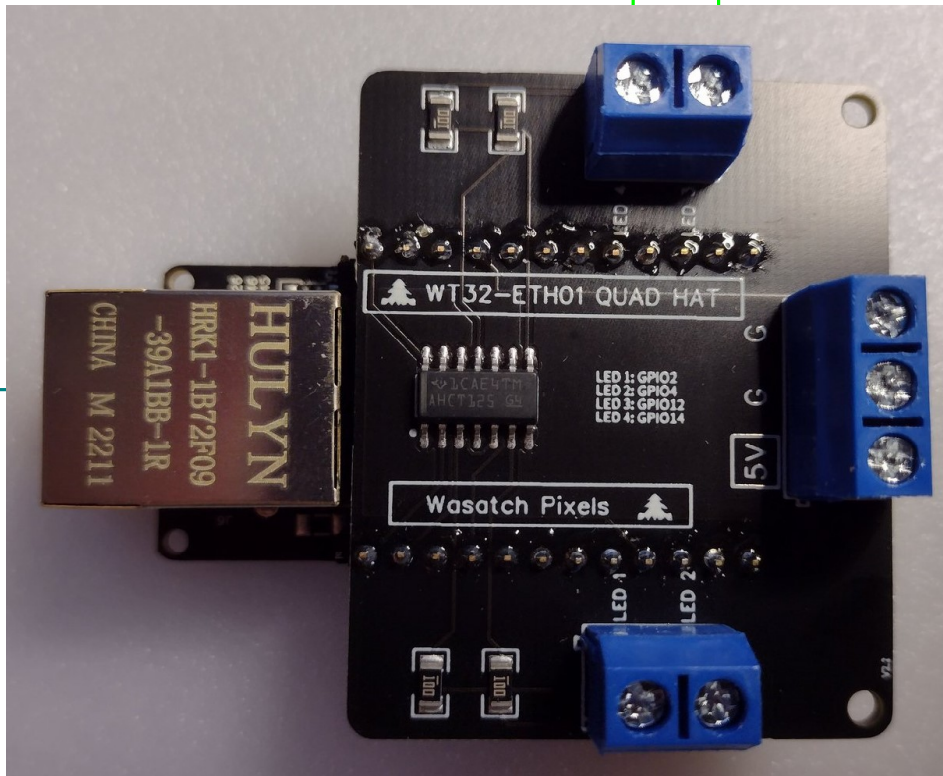
Connect to Data on LED String 4

Connect to Data on LED String 3

Connect to Ethernet

Connect to -V on Power Source

Connect to +5V Power Source



* Note 2: There is 1 extra ground (-V) terminal on the board. If you are using the same power supply for your pixels to power your Quad controller, you don't need to connect anything to this terminal. If you are using a separate power supply to power your pixels, then you will need to connect one of the extra -V (GND) pins on the controller to -V from your pixel power supply in order to have a common ground between power supplies.

Connect to Data on LED String 1

Connect to Data on LED String 2

Note 3: Connect +V and -V from your pixel power supply/distribution block to the +V and -V (GND) of each string of pixels. You will only need to connect the Data lines from the QUAD controller to the Data lines of your pixel strings.